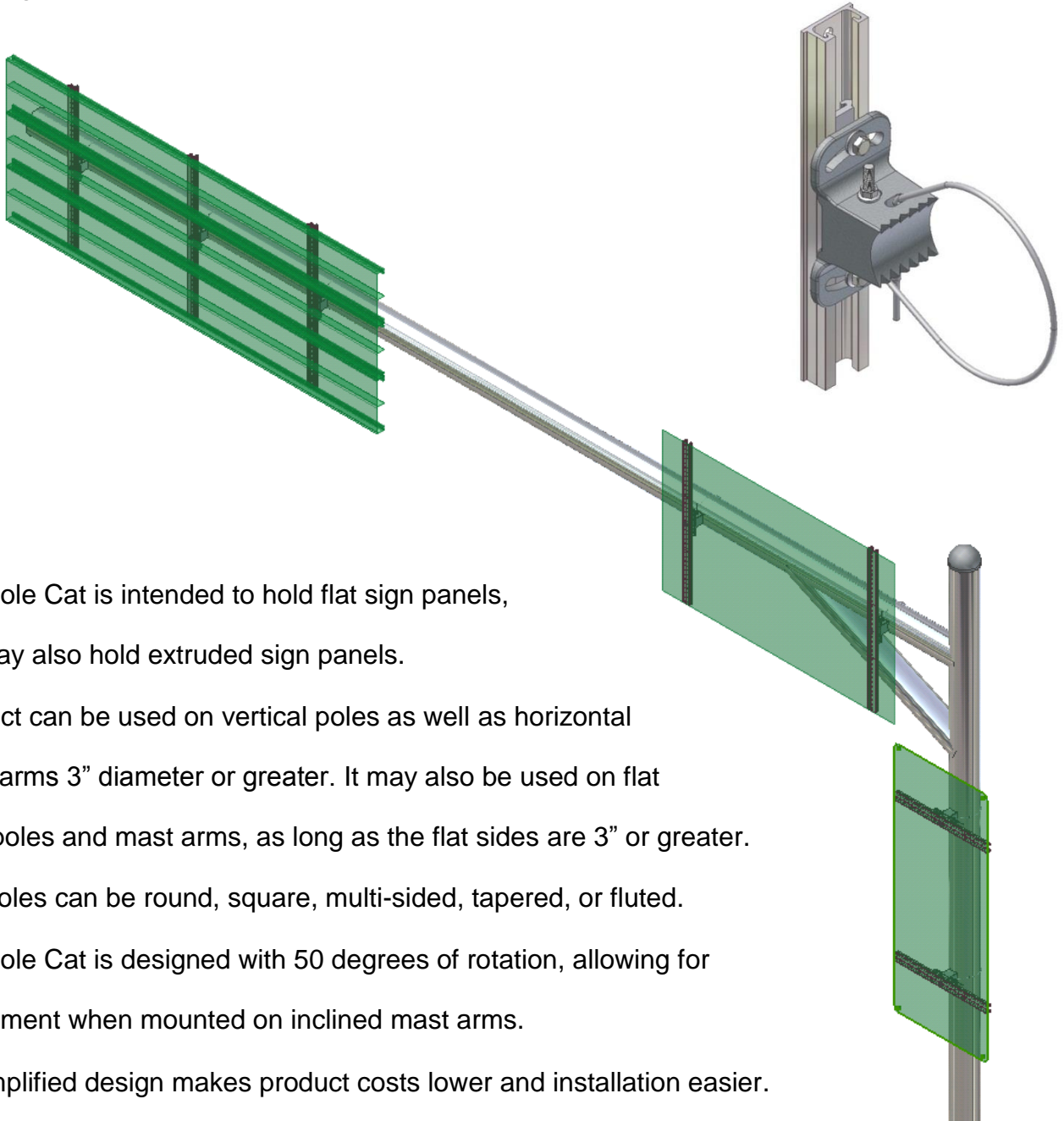


## **WHAT's NEW:**

- **POLE CAT**  
**Mast Arm / Luminaire Sign Mount Bracket**

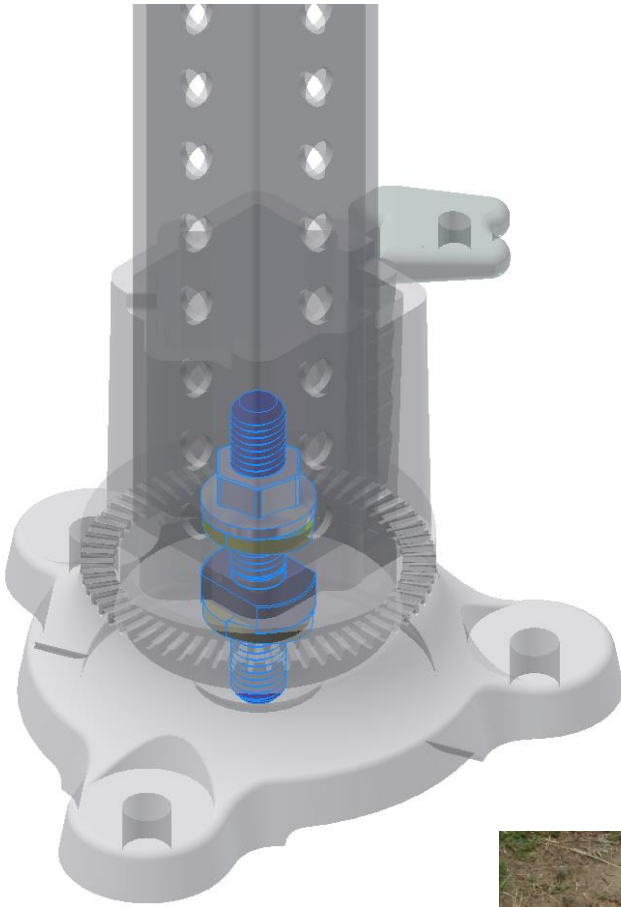
– Designed to conform to AASHTO wind load standards



- The Pole Cat is intended to hold flat sign panels, but may also hold extruded sign panels.
- Product can be used on vertical poles as well as horizontal mast arms 3" diameter or greater. It may also be used on flat side poles and mast arms, as long as the flat sides are 3" or greater. The poles can be round, square, multi-sided, tapered, or fluted.
- The Pole Cat is designed with 50 degrees of rotation, allowing for adjustment when mounted on inclined mast arms.
- Its simplified design makes product costs lower and installation easier.

- For additional product information visit our [Pole Cat Sign Mount Bracket](#) catalog pages found under PRODUCTS
- Be sure to view our [Pole Cat Brochure](#).

- **KLEEN BREAK Model 425**
  - FHWA Accepted Shear Bolt Sign Post Coupler



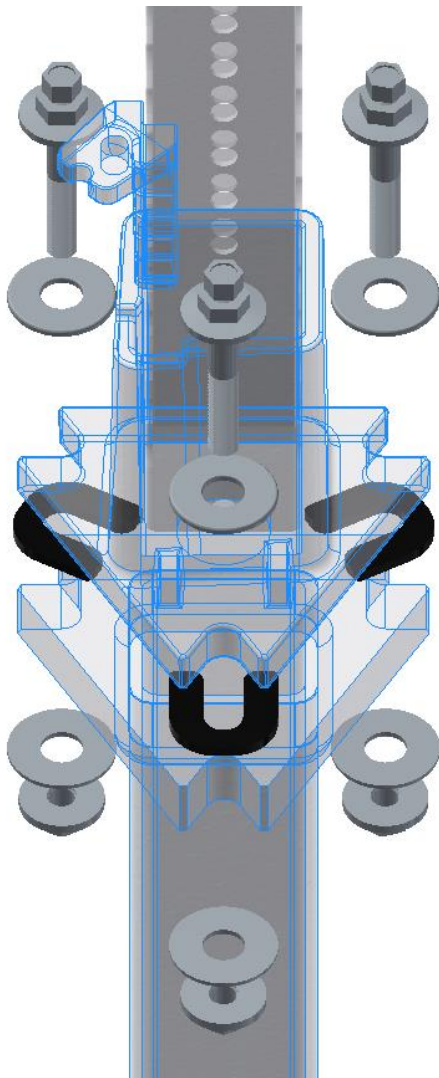
- Product is a 360 degree index-able, surface mountable sign post coupler for Perforated Square Steel Tube sign posts.
- Product allows for high impact sign support installations to break away upon impact, while providing quick inexpensive reinstallation without the need for a new anchor.
- All parts of Kleen Break are typically reusable after impact except the Shear Bolt Set.
- Product can be mounted on top of existing concrete, Flush Mount installed into concrete for flush breakaway in pedestrian locations, or soil mounted in firm soil.



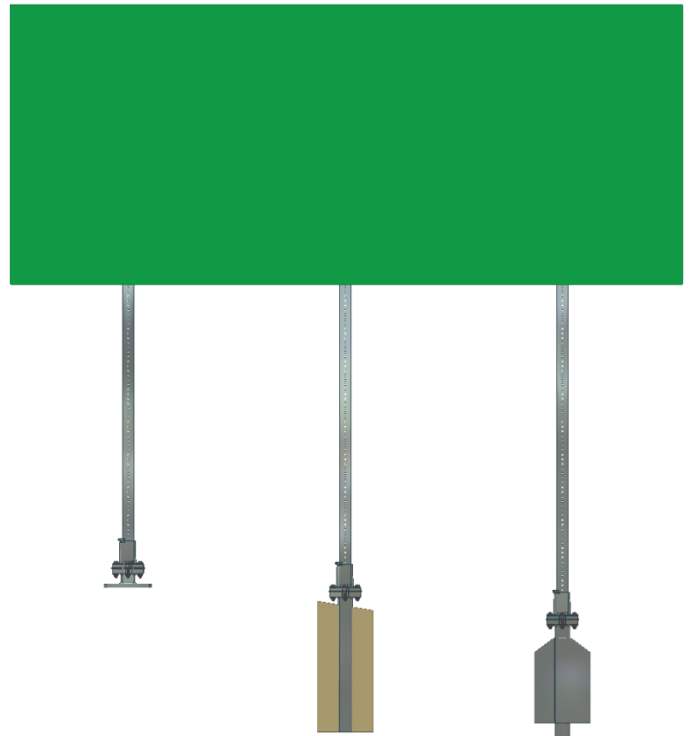
- For additional product information visit our [Kleen Break Sign Post Coupler](#) catalog page found under PRODUCTS
- Be sure to view our [Kleen Break Brochure](#).

- **REDI-TORQUE Model 280**

- FHWA Accepted Torqueless Bolt for Slip Base Sign Supports



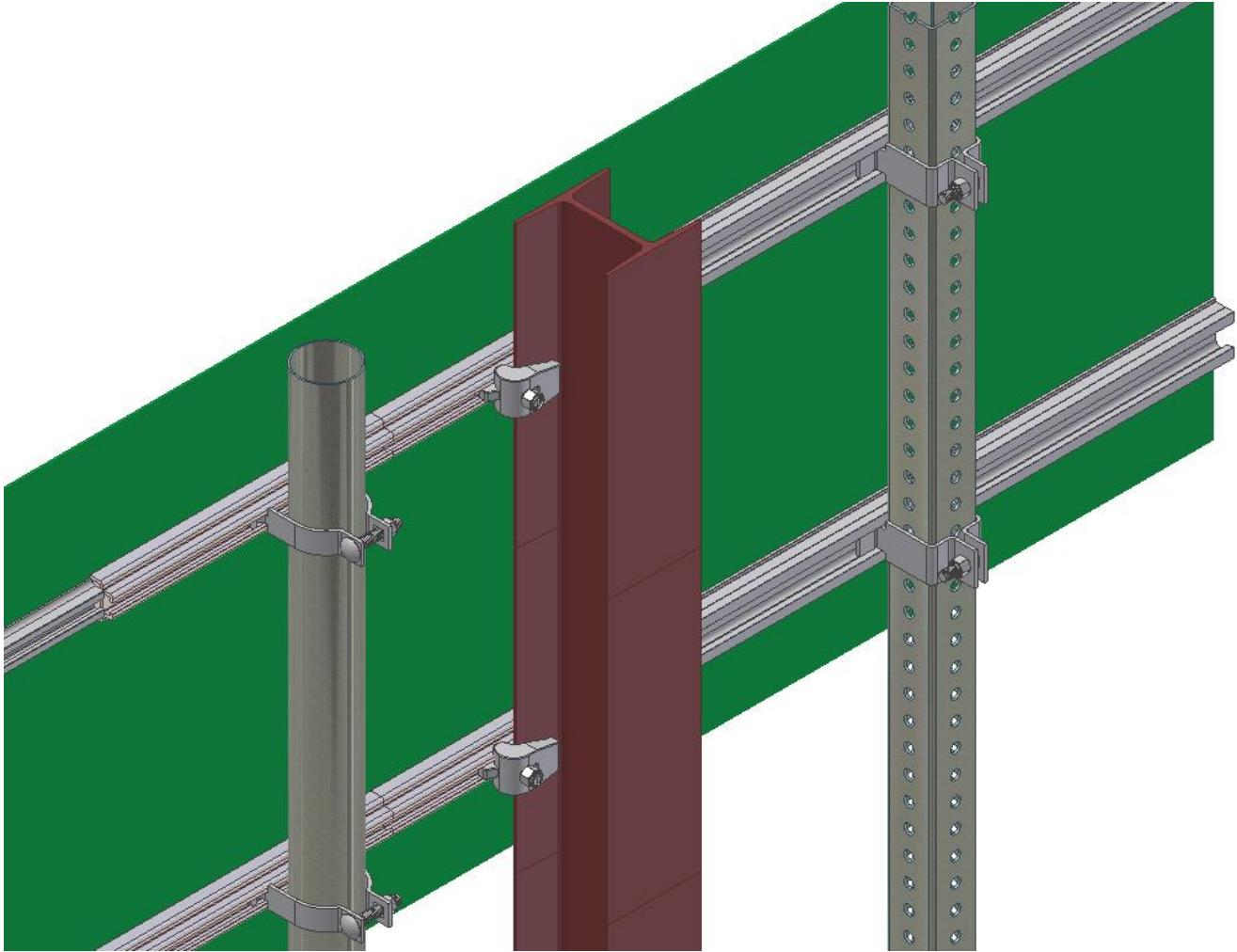
- Triangular, Multi-directional Slip Base System
- Product allows for Redi-Torque Bolts to be properly tightened without a torque wrench, while providing necessary holding strength for the post they are supporting.
- Ease of reinstallation in high impact areas, without the need for a torque wrench.
- Allows break-away performance in accordance with FHWA and NCHRP 350 requirements.
- Product works with omni-directional and bi-directional Slip Base Systems.



- For additional product information visit our [Redi-Torque Slip Bases](#) catalog page found under PRODUCTS
- Be sure to view our [Redi-Torque Brochure](#).

- **ADJUST-A-SIGN**

- Adjustable Stiffening and Clamping System for Mounting Signs to Posts



- Sign Bracing extruded from 6061-T6 aluminum alloy
- Stainless Steel Sign Brace Post Clamps for Square, Round, Beam, Mast Arms & Wood Posts
- J-Type Beam Clamps for beam mounting
- Signs are adjustable both vertically and horizontally without removing the sign from the post
- Same Hardware fits Extruded Panels
- Signs can be mounted using Drive Rivets, Tech Screws, or high strength adhesive tape
- Used by numerous state DOT's
- Various bracing sizes and some of the numerous mounting options are shown in the picture above – call to discuss your requirements
- For additional product information visit our [Sign Mounting Brackets, Bracing & Clamps](#) catalog pages found under PRODUCTS
- Be sure to view our [Adjust-A-Sign Brochure](#).

- **MASSH-400**

- Multi-directional Sign Support Hardware System for 4" Square Steel Posts



- Crash tested to MASH test level 3 and issued Eligibility Letter SS-180 & SS-182 by FHWA.
- OMNI-DIRECTIONAL - Designed to be impacted from any direction.
- Sign post will bend, pivot, and / or move out of the way of an errant vehicle following impact.
- Designed to hold guide signs, logo signs, recreational signs, cultural signs, hospital signs, speed limit signs, crossover signs, way-finding signs, exit signs, and arrays, to name a few.
- MASSH-400 structure is capable of replacing many or all solid wood and laminated wood sign posts, S-beam and W-beam sign posts, and round sign posts.
- Hinges can be rebuilt by DOT personnel to keep maintenance costs low.
- MASSH-400 can reduce number of posts for some sign installations.
- Posts can be cut to length ahead of time or in the field to reduce installation times.
- System is capable of holding flat or extruded panel signs.
- Quick installation or reinstallation safely reduces time roadway crews need to be on site.
- Immediate (same day) sign reinstallation is a real thing with the MASSH-400 sign structure.
- MASSH-400 lowers costs and improves safety while reducing risks.
- For additional product information please contact us at 1-800-621-7948 or send us an email at [info@x-sqrd.com](mailto:info@x-sqrd.com)